

NORIT

École Josef-Schwarz

Innovative and Sustainable School Construction with NORIT Dry Screed

Heilbronn, Allemagne



Description du projet

The new Josef-Schwarz School in Heilbronn stands as a prime example of modern and sustainable school construction in lightweight design. Built in the dynamically developing Neckarbogen district, the project combines architectural quality with flexible and resource-efficient building methods. The design was created by Behnisch Architekten Stuttgart.

The school was conceived as a three-part learning campus, featuring three distinct “learning environments” constructed in a modern timber-steel hybrid lightweight design. These pavilion-style structures were built on top of a newly constructed reinforced concrete base, which forms the functional foundation of the campus. The ground floor accommodates all central community facilities, including the sports hall, cafeteria, café, administrative offices, and parking areas. The modular lightweight construction of the upper school buildings enabled a resource-efficient and time-saving building process while offering maximum flexibility for contemporary educational concepts and future-oriented learning spaces.

NORIT Dry Screed: Fast, Clean, Efficient

The flooring systems **NORIT-TE 25** and **NORIT-TE A 30** were used – high-quality gypsum fiber dry screed panels installed with an innovative click system. This system allows for a precise and secure connection without screws or staples. When combined with NORIT adhesive, it creates a smooth, durable surface suitable for all common floor coverings – entirely without adding moisture to the construction.

NORIT Bound Fill: A Solid Base for Level Floors

To level uneven subfloors, the **NORIT Bound Fill** was used – a cement-bound lightweight leveling compound with mineral and organic lightweight aggregates. It is particularly suitable for compensating height differences in both new builds and renovation projects.

The combination of NORIT dry screed and bound fill enabled a sustainable, fast, and technically advanced interior construction of the Josef-Schwarz School.

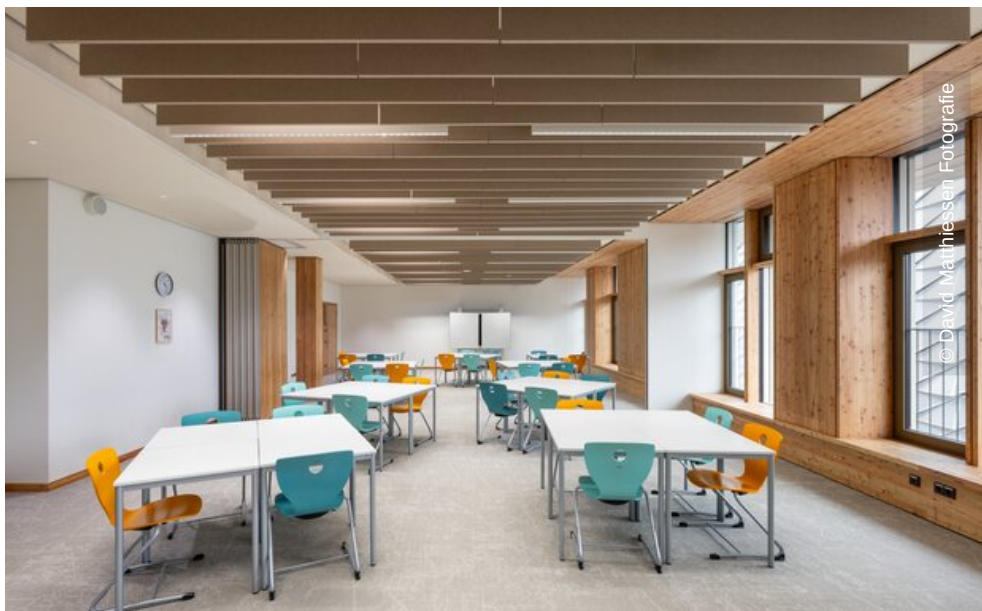
Généralités

Concept	Innovative and Sustainable School Construction with NORIT Dry Screed
Type de bâtiment	Écoles
Division	Lindner Gipsfaser- und Trockenbau
Réalisation	2024 - 2025
Architecte	Behnisch Architekten
Maître d'œuvre	Schwarz Immobilienmanagement GmbH & Co. KG
Educational Institution	Phorms Education
Floor Layers	Mohr + Hornikel GmbH

Exécution des travaux

- **Chape sèche NORIT**
NORIT-TE 25
- **Remblais NORIT**
NORIT-Bound Levelling Compound





© David Mattheissen Fotografie



© David Mattheissen Fotografie



© David Mattheissen Fotografie



© David Mattheissen Fotografie